

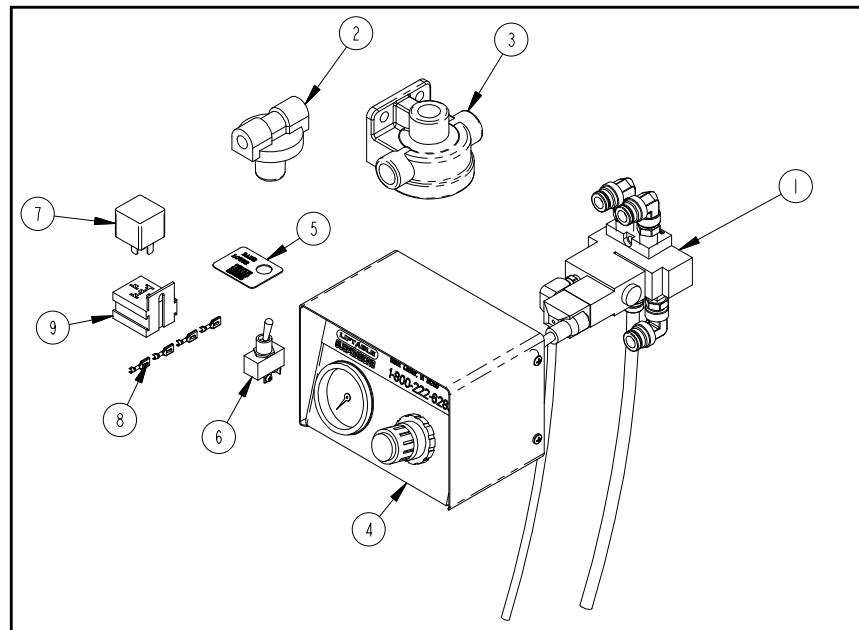
# LINK

## LIFTABLE SUSPENSIONS

# INSTALLATION INSTRUCTIONS

## PARTS LIST

### AIR CONTROL KIT (1350-1004)



ITEM	PART #	PART DESCRIPTION	QTY
1	1301-0555	VALVE-SOLENOID, ASSEMBLY	1
2	1301-0084	VALVE-PRESSURE PROTECTION	1
3	1301-0546	VALVE-QUICK RELEASE	1
4	1350-1011	AIR CONTROL BOX ASSEMBLY	1
5	1500-1318	PLATE-SWITCH, LIFT	1
6	1505-0350	SWITCH-TOGGLE, HI STEER	1
7	1505-0351	RELAY	1
8	1505-0353	CONNECTOR-PUSH-ON, FEMALE	4
9	1505-0354	RELAY BASE	1

**OPTIONAL:** For quicker and easier installation an additional Installation Kit (Link part # 800A0014) provides a complete set of fasteners, connectors, airline and wire for use with this kit. For details call Link. Customer Service at 1-800-222-6283.

Link Mfg. Ltd.  
223 15th St. N.E.  
Sioux Center, IA USA  
51250-2120

(712) 722-4874  
Fax (712) 722-4876

**QUESTIONS?  
CALL CUSTOMER  
SERVICE  
1-800-222-6283**

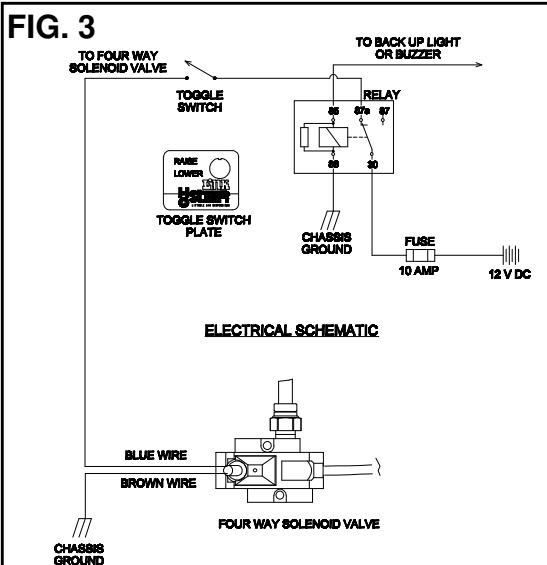
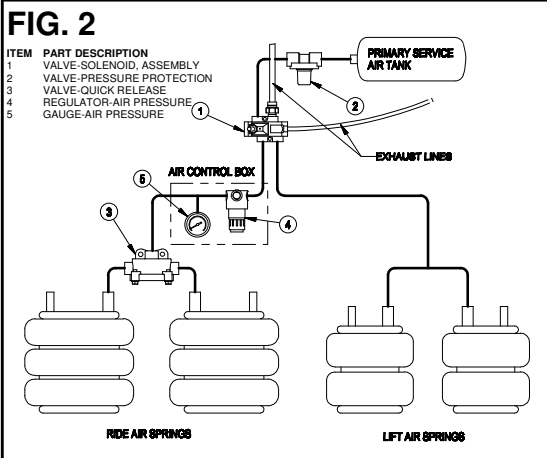
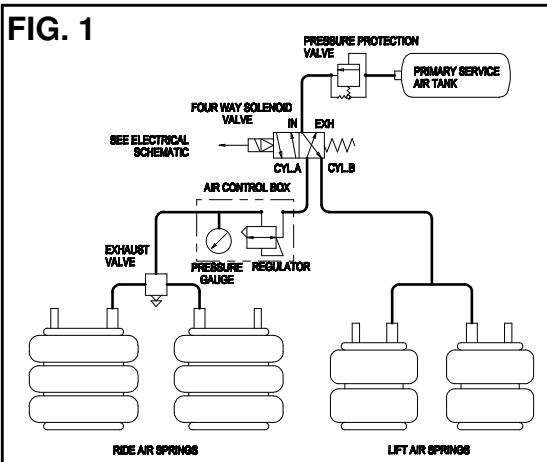
**NOTES:**

- 1) If you are not integrating the optional Link Mfg. Installation Kit: use 3/8" DOT airline for all plumbing between fittings; use brass DOT fittings for all plumbing connections; use 14-gage primary wire for all electrical connections.
- 2) Considerations should be made to route all wiring and airline in protective locations away from any moving parts.
- 3) Cable ties or other fastening devices may be required to secure airline, wire and/or fittings to truck/suspension.
- 4) Apply Permatex #807 or comparable anaerobic pipe thread sealant to fill three exterior pipe threads on brass fittings and tighten 1-1/2 revolutions beyond hand tight.

**IMPORTANT:** When installing your kit use the instructions for the correct option as determined below:

- OPTION 1:** Kit will be installed on a steerable suspension in which the driver wants the lift axle to be up when ignition is off.  
**OPTION 2:** Kit will be installed on a steerable suspension in which the driver wants the lift axle to be down when ignition is off.  
**OPTION 3:** Kit will be installed on a non-steer suspension in which the driver wants the lift axle to be up when ignition is off.  
**OPTION 4:** Kit will be installed on a non-steer suspension in which the driver wants the lift axle to be down when ignition is off.

**OPTION 1: STEERABLE, DEFAULT UP**



**PLUMBING INSTRUCTIONS**

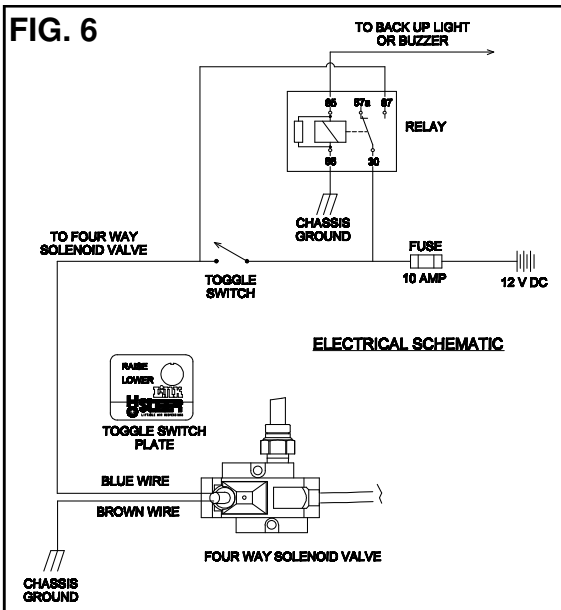
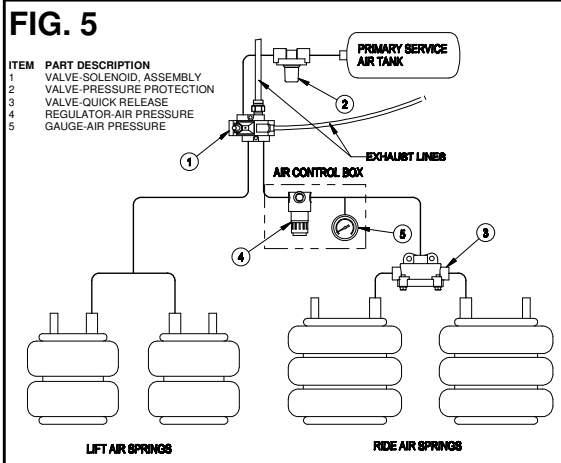
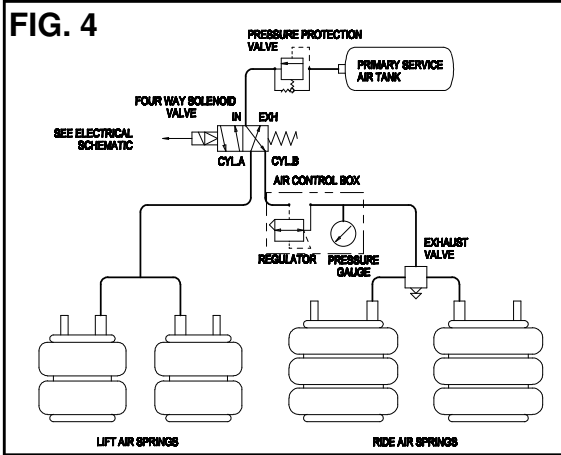
- A. Connect pressure protection valve directly to the air supply tank on the truck. **IMPORTANT:** Make sure direction of flow for the system matches flow indicator on the pressure protection valve.
- B. Securely mount the Solenoid Valve Assembly to the truck in a relatively protective location, making sure that the open ends of the exhaust lines are oriented down.
- C. Loosely mount the Air Control Box Assembly to the truck exterior in desired location for driver convenience, making sure air controls are easily accessible.
- D. Securely mount the Exhaust Valve to the suspension cross-member.
- E. Route all airline to your suspension using plumbing schematic in Figures 1 and 2.
- F. Secure control box and any loose components to the truck.

**ELECTRICAL INSTRUCTIONS**

**CAUTION:** Always disconnect the battery while working with the vehicle's electrical system.

- A. Mount the relay base to the truck in a protective location. **NOTE:** If there is an open slot in the truck's relay panel and you wish to wire your relay through this panel you will not need the supplied relay base.
- B. Make all wiring connections to fuse, relay, and truck as shown in Figure 3, crimping Push-On Connectors to wires and mounting them in the supplied relay base. **NOTE:** Make sure the 12 VDC source is switched (turns off with the key)
- C. Make connections to the toggle switch from terminal 87a on the relay, and the blue wire from the solenoid valve.
- D. Attach the brown wire from the solenoid valve to a reliable grounding point on the truck. Attachment to the truck frame is **NOT** sufficient for a trouble-free ground. **NOTE:** The yellow wire with a green stripe is not used.
- E. Mount the toggle switch and toggle switch plate to the interior of the truck in a desired location. **NOTE:** Make sure that lift axle position correlates with "Raise"/"Lower" position on toggle switch plate (tab on toggle switch plate may need to be removed).
- F. When all electrical connections have been made, reconnect the battery, pressurize the system and tighten any fittings that are leaking.

## OPTION 2: STEERABLE, DEFAULT DOWN



### PLUMBING INSTRUCTIONS

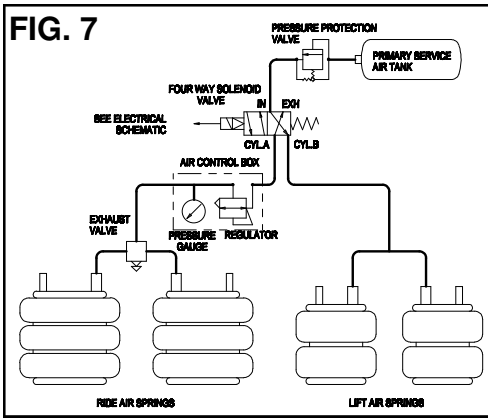
- Connect pressure protection valve directly to the air supply tank on the truck. **IMPORTANT:** Make sure direction of flow for the system matches flow indicator on the pressure protection valve.
- Securely mount the Solenoid Valve Assembly to the truck in a relatively protective location, making sure that the open ends of the exhaust lines are oriented down.
- Loosely mount the Air Control Box Assembly to the truck exterior in desired location for driver convenience, making sure air controls are easily accessible.
- Securely mount the Exhaust Valve to the suspension cross-member.
- Route all airline to your suspension using plumbing schematic in Figures 4 and 5.
- Secure control box and any loose components to the truck.

### ELECTRICAL INSTRUCTIONS

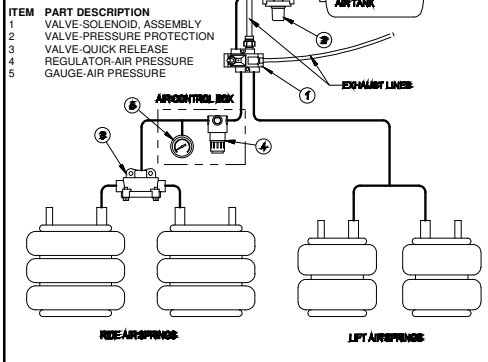
**CAUTION:** Always disconnect the battery while working with the vehicle's electrical system.

- Mount the relay base to the truck in a protective location. **NOTE:** If there is an open slot in the truck's relay panel and you wish to wire your relay through this panel you will not need the supplied relay base.
- Make all wiring connections to fuse, relay, and truck as shown in Figure 6, crimping Push-On Connectors to wires and mounting them in the supplied relay base. **NOTE:** Make sure the 12 VDC source is switched (turns off with the key)
- Make connections to the toggle switch from terminal 87, and terminal 30 on the relay. Also connect the blue wire from the solenoid valve to the toggle switch. **IMPORTANT:** Make sure that the toggle switch is wired so that the lift axle is down when the switch is off.
- Attach the brown wire from the solenoid valve to a reliable grounding point on the truck. Attachment to the truck frame is **NOT** sufficient for a trouble-free ground. **NOTE:** The yellow wire with a green stripe is not used.
- Mount the toggle switch and toggle switch plate to the interior of the truck in a desired location. **NOTE:** Make sure that lift axle position correlates with "Raise"/"Lower" position on toggle switch plate (tab on toggle switch plate may need to be removed).
- When all electrical connections have been made, reconnect the battery, pressurize the system and tighten any fittings that are leaking.

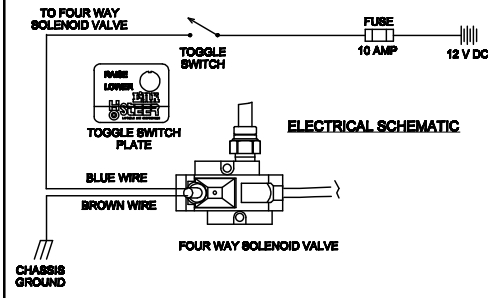
**FIG. 7**



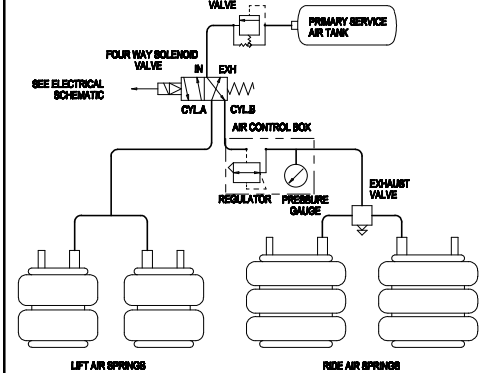
**FIG. 8**



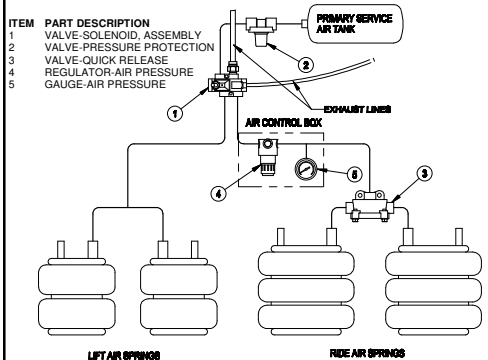
**FIG. 9**



**FIG. 10**



**FIG. 11**



**OPTION 3: NON-STEER,DEFAULT UP**

**PLUMBING INSTRUCTIONS**

- A. Connect pressure protection valve directly to the air supply tank on the truck. **IMPORTANT:** Make sure direction of flow for the system matches flow indicator on the pressure protection valve.
- B. Securely mount the Solenoid Valve Assembly to the truck in a relatively protective location, making sure that the open ends of the exhaust lines are oriented down.
- C. Loosely mount the Air Control Box Assembly to the truck exterior in desired location for driver convenience, making sure air controls are easily accessible.
- D. Securely mount the Exhaust Valve to the suspension cross-member.
- E. Route all airline to your suspension using plumbing schematic in Figures 7 and 8.
- F. Secure control box and any loose components to truck.

**ELECTRICAL INSTRUCTIONS**

**CAUTION:** Always disconnect the battery while working with the vehicle's electrical system.

- A. Make all wiring connections to fuse, truck, and toggle switch as shown in Figure 9. **IMPORTANT:** Make sure that the toggle switch is wired so that the lift axle is down when the switch is on.
- B. Attach the brown wire from the solenoid valve to a reliable grounding point on the truck. Attachment to the truck frame is **NOT** sufficient for a trouble-free ground. **NOTE:** The yellow wire with a green stripe is not used. **NOTE:** Make sure the 12 VDC source is switched (turns off with the key).
- C. Mount the toggle switch and toggle switch plate to the interior of the truck in a desired location. **NOTE:** Make sure that lift axle position correlates with "Raise"/"Lower" position on toggle switch plate (tab on toggle switch plate may need to be removed).
- D. When all electrical connections have been made, reconnect the battery, pressurize the system and tighten any fittings that are leaking.

**OPTION 4: NON STEER, DEFAULT DOWN**

**PLUMBING INSTRUCTIONS**

- A. Connect pressure protection valve directly to the air supply tank on the truck. **IMPORTANT:** Make sure direction of flow for the system matches flow indicator on the pressure protection valve.
- B. Securely mount the Solenoid Valve Assembly to the truck in a relatively protective location, making sure that the open ends of the exhaust lines are oriented down.
- C. Loosely mount the Air Control Box Assembly to the truck exterior in desired location for driver convenience, making sure air controls are easily accessible.
- D. Securely mount the Exhaust Valve to the suspension cross-member.
- E. Route all airline to your suspension using plumbing schematic in Figures 10 and 11.
- F. Secure control box and any loose components to truck.

**ELECTRICAL INSTRUCTIONS**

(See electrical instructions for option 3)